



WEEKLY E-NEWSLETTER

INFORMATION FOR
SEPTEMBER 23 - OCTOBER 2, 2022

UPCOMING EVENTS

See what's happening this [month](#).

NASIS PARENT/STUDENT PORTAL

[Access](#) assignments, grades and more.

PARTNERSHIP FOR STUDENT SUCCESS HANDBOOK

Discover what's new in the [handbook](#).

SFIS DAILY BULLETIN

Stay in the [know](#).

COVID MITIGATION CENTER

View mitigation [information](#) and updates

Community Links

[SFIS Website](#)

[Library Media Center](#)

[2022-23 School Calendar](#)

[School Forms/Contracts](#)

[Student Fee & Other
Payments](#)



Santa Fe Indian School 2022 - 2023

BELL SCHEDULE

ODD/EVEN MONDAY - THURSDAY SCHEDULE

Brave Connections	8:05 am - 8:35 am
1st/2nd period	8:40 am - 10:05 am
3rd/4th period	10:10 am - 11:35 am
Mid School Lunch	11:35 am - 11:55 am
9/10 grade Lunch	11:55 am - 12:10 pm
11/12 grade Lunch	12:10 pm - 12:25 pm
5th/6th period	12:30 pm - 1:55 pm
7th/8th period	2:00 pm - 3:25 pm

ODD/EVEN FRIDAY SCHEDULE

1st/2nd period	8:05 am - 9:20 am
3rd/4th period	9:25 am - 10:35 am
5th/6th period	10:40 am - 11:50 am
Mid School Lunch	11:50 am - 12:10 pm
9/10 grade Lunch	12:10 pm - 12:25 pm
11/12 grade Lunch	12:25 pm - 12:40 pm
7th/8th period	12:45 pm - 1:55 pm
Health & Wellness	2:00 pm - 3:25 pm

IMPORTANT TELEPHONE NUMBERS

High School Academics

HS Front Office
(505) 989-6330

HS Dean of Students
(505) 216-7403

HS Attendance
(505) 989-6327

Middle School Academics

MS Front Office
(505) 989-6393

MS Dean of Students and
Attendance
(505) 216-7413

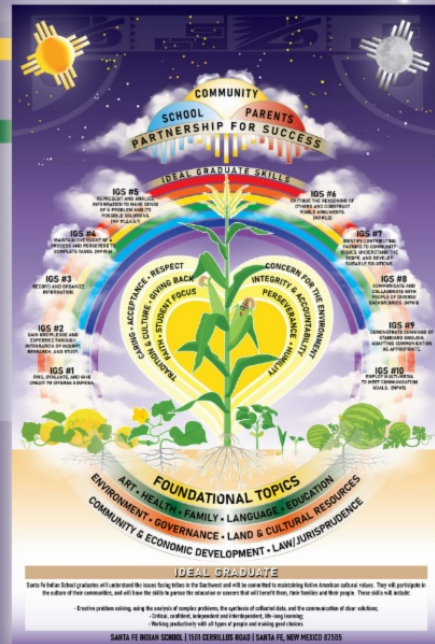
MS Academic Counselor
(505) 989-6328

Campus Resources

Information Technology
(888) 966-8557
helpdesk@sfnk12.nm.us

Admissions
(505) 989-6370
admissions@sfnk12.nm.us

Security on Duty
(505) 690-4380



Gwilym Johnson, 12th grade student intern, created the attached wallpaper for student Chromebooks. The wallpaper serves as a reference for students and staff which contains the bell schedule, important phone numbers, a student assistance grid, and the beautiful SFIS Curriculum Visual created by William Pacheco. Gwilym's design was inspired by the curriculum visual and the sacred colors in the SFIS logo. He is a very talented graphic designer and an amazing intern eager to learn and craft his gift.

Week At-A Glance

TODAY, Friday, 9/23

Even Schedule
Braves Football vs Espanola
Lady Braves Soccer @ Santa Fe Prep

Saturday, 9/24

Lady Braves Soccer vs Rehoboth
Runnin Braves/Lady Braves X-Country @
Capital City Invite

Sunday, 9/25

Residential Count Weeks (9/25-10/15)
MS/HS Student Living Open House - Potluck

Monday, 9/26

Transportation Count Week (9/26 - 9/30)
Residential Count Weeks (9/25-10/15)

Tuesday 9/27

Transportation Count Week (9/26 - 9/30)
Residential Count Weeks (9/25-10/15)

Wednesday, 9/28

Transportation Count Week (9/26 - 9/30)
Residential Count Weeks (9/25-10/15)
MS Braves Football @ Las Vegas Memorial

Thursday, 9/29

Transportation Count Week (9/26 - 9/30)
Residential Count Weeks (9/25-10/15)
Lady Braves Volleyball @ Mora

Friday, 9/30

All Student Field Trip to Taos
Transportation Count Week (9/26 - 9/30)
Residential Count Weeks (9/25-10/15)
Braves Football vs Espanola
Lady Braves Soccer @ Santa Fe Prep

Saturday, 10/1

Residential Count Weeks (9/25-10/15)
John Grimley SFIS Memorial X-Country Invite
JV Braves Football vs Hozho Charter School
Lady Braves Soccer @ Robertson
Lady Braves Volleyball vs Raton

HAPPY FRIDAY



Sunday, 10/2
Residential Count Weeks (9/25-10/15)

All-Student Field Trip Information Taos Pueblo Feast Day, September 30, 2022



News

Visit our website for current information on our all school trip to Taos on September 30th

On Friday, September 30, 2022, we will be taking an all-school field trip to Taos Pueblo Feast Day! Our Pueblo Convocation approach guides this important experience and will reinforce our Core Value of Respect and make the connection that our traditions are the foundation of our education.

[Read More on Website](#)

Please make sure your students' form is up-to-date

[Taos Pueblo Field Trip Form](#)

Student Rights & Responsibility Information

Cell Phone Policy Reminder

Dear SFIS Parents/Guardians,

The SFIS Partnership for Success Handbook ([click here to access the handbook](#)) shares the important

expectations of the school. Please read the cell phone policies below and speak with your child about these expectations:

Cell Phone and Electronic Device Use

Mobile devices, including but not limited to cell phones, smart watches, and iPads, cannot be used by students during class, assemblies, presentations and other formal gatherings. Students are provided appropriate technology for educational purposes that can be used at the teachers' direction in the classrooms. Electronic/Mobile devices will be confiscated if they are being used in opposition to classroom or school rules and turned over to the HS/MS Dean of Students.

Headphones are not to be worn in the ear and on the body during class, assemblies, presentations and other formal gatherings. High School residential students cannot use these devices after lights out in the dormitory. Middle School residential students cannot take their phones to evening program structured activities and are required to turn in their cell phone and charger before 8:30 pm. Weekend MS dorm students may use their phones beginning Friday afterschool and may use it throughout the weekend until 4:00 PM on Sunday.

Violation of Cell Phone Policy

Personal mobile devices will be confiscated for violating any of the guidelines set above. *This policy serves as a first warning to students and parents.* Therefore, the first time an electronic device is taken, it will be confiscated until the end of the school week at which time the student can sign it out. The second time an electronic device is confiscated, it will be held for 7 days and the student can sign it out. The third time an electronic device is confiscated, or if a student refuses to turn over his/her device, a student will be written up for insubordination and a family conference will be held. During the academic day, devices will be confiscated and held in the Academic Office. During the evening, devices used contrary to school rules will be confiscated and held by their student living advisor. Devices will be returned according to policy as determined by the school. A student's cell phone may be confiscated and searched if there is reasonable suspicion that illegal or dangerous activity is occurring and to protect the health and safety of students and school staff. Designated staff have permission to view phones as per policy. Loss/Damage of Personal Electronics and Mobile Devices SFIS provides sufficient technology for students to complete their work in both academic and residential programs. Therefore, SFIS advises students not to bring personal laptop computers or other mobile devices on campus. SFIS is not responsible for loss, damage, or theft of these items.

Office of Emergency Management

Effective immediately, and until further notice. (Includes Staff, Students, and Visitors)

SFIS is moving to "Indoor Masking Recommended", as per the SFIS Masking Policy. This is because currently, all counties in New Mexico have community COVID levels at low or medium.

I want to be clear that this could change based on increases in community COVID levels in any of the NM Counties that are represented at SFIS. (Sandoval, Santa Fe, Bernalillo, Taos, McKinney, San Juan, San Miguel, Rio Arriba, Lincoln, Cibola and Valencia Counties). If one of the mentioned counties reverts to high levels, we must revert to " Indoor Masking Required".

The CDC updates this county data every Thursday evening, therefore I will update the SFIS community on Fridays, IF any changes occur that require us to adjust the masking requirements.

Masking is a personal choice, we encourage you to make this decision in consideration of those

around you, both at home and at school, and remember that masking is still recommended. Be sure to respect others decisions regarding masking – there is no right or wrong answer here.

If you are symptomatic in any way, be aware that the Guidance Tree clearly states the requirement for continued masking

additionally if you were positive for COVID in the last 10 days and have completed your isolation period you are still required to mask indoors until you are outside the 10 day window

IF you would like to review the map of NM County Community COVID Levels please use the link below:

[NM County Community COVID Levels](#)

Food Delivery Information

Dear SFIS Parents/Guardians,

Our policy regarding food deliveries for SY 22-23 has changed. Below is the new guidance regarding this policy:

1. **Parents/Guardians may deliver food to their students between the hours of 6:30pm-8:30pm.**
2. **No 3rd party delivery services** (UberEats, DoorDash, Dominoes Delivery, etc.) – any drivers that arrive at SFIS from any 3rd party with a food delivery will be turned around at the gate.
3. **No food deliveries during the academic day** (There is one exception to this rule as noted in #4).
4. **Birthday Exception:** Parents may deliver cake, treats, or food on students' birthday during the students' lunch period, or after 4:00pm. Parents **MUST** coordinate this with the ACADEMIC OFFICE for lunch period deliveries, or with the STUDENT LIVING OFFICE for afterschool deliveries before 6:30pm.

[High School Information](#)

Congratulation

2022

Santa Fe Indian School

Homecoming Court

Homecoming King

Preston Chavarria, Santa Clara Pueblo

Homecoming Queen

Shade-Phea Young, Navajo, Ohkay Owingeh and Hopi

11th Grade Prince

Javen Garcia, Ohkay Owingeh



11th Grade Princess

Ali Ortiz, Santa Clara Pueblo

10th Grade Prince

Jonathan Vigil, Pueblos of Santa Clara and Tesuque

10th Grade Princess

Asia Gabaldon, Ohkay Owingeh and Zuni

9th Grade Prince

Abel Herrera, Cochiti Pueblo

9th Grade Princess

Pearletta Calvert, Ohkay Owingeh

Middle School Information



SEPTEMBER 2022

Sun	Mon	Tue	Wed	Thu	Fri	Sat
				1	2	3
				4	5	6
				7	8	9
				10	11	12
				13	14	15
				16	17	18
				19	20	21
				22	23	24
				25	26	27
				28	29	30
				31		

[Download September Calendar](#)

[Learning Media Center Information](#)

BIG READ SANTA FE

SEPTEMBER & OCTOBER
BIG READ. CULMINATING
EVENT WITH AUTHOR
TOMMY ORANGE AT
SANTA FE INDIAN
SCHOOL ON NOVEMBER
5TH

There



A novel

There



Tommy Orange



"TOMMY
ORANGE'S
WONDEROUS
AND SHATTERING
NOVEL FOLLOWS
TWELVE
CHARACTERS
FROM NATIVE
COMMUNITIES:
ALL TRAVELING
TO THE BIG
OAKLAND
POWOW, ALL
CONNECTED TO
ONE ANOTHER IN
WAYS THEY MAY
NOT YET
REALIZE."

Your paragraph text

SANTA FE PUBLIC LIBRARY IS HOSTING A CITY-WIDE READ
WITH SUPPORT FROM A NEH GRANT
SFPL PROVIDED SFIS WITH BOOKS FOR ALL HIGH SCHOOL
STUDENTS AND WE LOOK FORWARD TO CONVERSATIONS
WITH THE SANTA FE COMMUNITY

**PARENTS! IF YOU WOULD LIKE TO
READ WITH US, PLEASE CONTACT
MS. LONGETEIG AT
LLONGETEIG@SFIS.K12.NM.US
AND WE WILL ARRANGE TO GET
YOU A COPY OF THE BOOK.**



SCAN THE QR CODE TO LEARN
ABOUT UPCOMING EVENTS OR
VISIT:
[HTTPS://SANTAFEREADS.WEEBL
Y.COM/](https://santafereads.weebly.com/)

Student Living Information



STUDENT LIVING OPEN HOUSE

Kick off to Residential Count Weeks

4pm-5pm Family Fun/Run Walk

5pm-6pm Dinner @ Cafeteria

6pm-7pm Caseload Showcase &
Raffle



SEPT. 25, 2022

4PM-7PM

Residential Count Weeks: Sept. 25, 2022-October 15, 2022.

Students need to be in the dorm for these three weeks.

Student absence's from the dorm will need to be accompanied by a letter from a medical provider, or Governor.

For more information call:

Middle School Student Living : 505-989-6334

High School Student Living: 505-989-6380

[Athletics Information](#)



WE ARE LOOKING FOR PARENT VOLUNTEERS!

**THE ATHLETIC DEPARTMENT IS
LOOKING FOR PARENT VOLUNTEERS
TO HELP MAN THE CHAINS FOR
HOME FOOTBALL GAMES.**

**FOR MORE INFORMATION, CONTACT
NATHAN ABEYTA AT 505-231-8693 OR
VIA EMAIL AT NABEYTA@SFIS.K12.NM.US.**



10TH ANNUAL



JOHN GRIMLEY

MEMORIAL CROSS COUNTRY MEET



VOLUNTEERS NEEDED

CALLING ALL SFIS ALUMNI

OCTOBER 1, 2022

8 AM - 12 PM

We need help with various areas such as parking, course spotters, finish line helpers, and cleanup.

All Runnin Braves Alumni will be recognized at this event

Interested in helping? Contact:

AD Brock @ 505-989-6350 or ebrock@sfis.k12.nm.us

Nathan Abeyta @ 505-231-8693 or nabeyta@sfis.k12.nm.us

Community Information

Attention San Felipe Students

Services begin Monday, September 26th from at the San Felipe Education Department for San Felipe students in grades K-12.

IN-PERSON HOMEWORK HELP!

MUST SIGN UP TO BEGIN SERVICES

- **Starts:** Monday, September 26, 2022
- **Where:** San Felipe Education Department
- **Who's eligible?** All K-12th grade San Felipe Students

SIGN UP HERE! →



All students who sign-up for homework help can be dropped off at the building each day Monday-Thursday from 3:30 PM-6 PM and Friday 3:30 PM-5 PM for help with their homework.



**PLEASE CALL OUR DEPARTMENT AT 505-771-9970
FOR MORE INFORMATION.**

Attention Ohkay Owingeh Students

Tutoring begins Tuesday, September 27th from 5:00 pm -7:00 pm at the P'oe Tsawaa Community Library for Ohkay Owingeh students in grades K-12.

**OHKAY OWINGEH DEPARTMENT OF
EDUCATION**

TUTORING PROGRAM

- ✿ **K-12TH GRADES**
- ✿ **ONE-ON-ONE INSTRUCTION**
- ✿ **SCHOOL SUPPLIES PROVIDED**



**ARE YOU IN NEED OF TUTORING? WE
ARE OFFERING A FREE TUTORING
PROGRAM FOR THE 22'-23' SCHOOL
YEAR FOR OHKAY OWINGEH STUDENTS!**

✿ **BEGINNING
SEPTEMBER
2022 (5PM-7PM)**

✿ **P'OE TSAWARA
COMMUNITY
LIBRARY**

**FOR
MORE
INFORMATION
&
APPLICATIONS**

**PLEASE CONTACT
US AT:
505-852-3477**

AILEEN_LOPEZ@EDUCATION.OOCS.ORG

Mentorship Opportunity



What is HOT?

The Healers Of Tomorrow (HOT) is an 8 month mentorship program where students explore health careers, are provided with college preparation, and develop leadership skills.

Monthly in person meetings.

Paired up with a college mentor, get exposed to various medical professionals and traditional healers.

Each of our students creates and implements a youth-led health project to improve their community.

Up to \$300.00 stipend with completion of this program.

This program offers a supportive environment to explore the interests of health careers and community service.

Virtual option only available for those who live 30+ min. outside of Albuquerque, NM.



You've turned my world upside down...



And I absolutely love the view!
Thank you for existing.

SANTA FE INDIAN SCHOOL | <http://www.sfis.k12.nm.us>



Santa Fe Indian School | 1501 Cerrillos Rd., Santa Fe, NM 87505

[Unsubscribe krshije@sfis.k12.nm.us](mailto:krshije@sfis.k12.nm.us)

[Update Profile](#) | [Constant Contact Data Notice](#)

Sent by sfis_newsletter@sfisonline.org in collaboration
with



Try email marketing for free today!